

# HIGH BRIGHTNESS BUSINESS PROJECTORS EB-L12000QNL/L20000UNL

**EPSON**  
EXCEED YOUR VISION

**BRIGHT, BRILLIANT & DETAILED.**



Get ready to impress and do even more with the EB-L12000QNL and the EB-L20000UNL high brightness laser projectors. Deliver stunning images in native 4K resolution<sup>1</sup>, and revel in colour brightness of up to 20,000 lumens with Epson 3LCD technology. Enjoy ease of mobility and installation flexibility. And high reliability with a robust design protected by a triple layered dust-proof structure. Put together, businesses now have all it takes in Epson to make a powerful impact on a bigger stage.



### IT'S IN THE DETAILS.

With 3LCD panels, every projection gives you spectacular true colours.

#### POWERFUL PRECISION

Colour brightness in outstanding levels of up to 20,000 lumens with spectacular image quality delivered in native 4K resolution<sup>1</sup> for best of both power and details.

#### RELIABLE PERFORMANCE

Robust design with triple layered dust-proof structure, plus 20,000 hours<sup>2</sup> maintenance free.<sup>3</sup>

#### HIGHER INSTALLATION FLEXIBILITY

Engineered for greater mobility and higher installation flexibility, supported by Epson Professional Tools and innovation.



<sup>1</sup> Native 4K resolution available only on Epson EB-L12000QNL.

<sup>2</sup> 20,000H life for laser light source. Approximate time until brightness decreases 50% from first usage. Measured by acceleration test assuming use of 0.04 - 0.20 mg/m<sup>3</sup> of particulate matter. Time varies depending on usage conditions and environments. Replacement of parts other than the light source may be required in a shorter period.

<sup>3</sup> No maintenance for the light source required up to 20,000H.

# LENS SPECIFICATIONS

## EB-L12000QNL/L20000UNL



Product Image					
Model	Ultra Short Throw Lens (ELPLX02)	Zoom Lens (ELPLU03) <sup>^</sup>	Zoom Lens (ELPLU04)	Zoom Lens (ELPLW05) <sup>^</sup>	Zoom Lens (ELPLW06)
Product Code	V12H004X02	V12H004U03	V12H004U04	V12H004W05	V12H004W06
Specification of Main Parts					
Projection Lens					
Type	Powered : Focus / Distortion		Powered : Zoom / Focus / Distortion		Powered : Zoom / Focus
F-Number	1.9	2.0 - 2.3	2.0 - 2.1	2.0 - 2.2	1.8 - 2.3
Focal Length	8.0mm	11.1 - 13.1 mm	14.8 - 17.7 mm	17.6 - 24.3 mm	27.3 - 37.0 mm
Zoom Ratio	N/A	1 - 1.2		1 - 1.4	
Dimension (Diameter of Zoom Ring x Length)	380 x 340 x 210 mm	150 x 240 mm	150 x 267 mm	135 x 200.5 mm	129.8 x 236 mm
Weight	5000g	1800g	3100g	1450g	2950g
Position Sensor			Yes		
Lens ID			Yes		
Connector			24Pin		
Lens Exchange Correspondence			Yes		
Screen Size (Projected Distance)	100° - 1000° [0.73 - 7.64 m] Throw ratio 0.34	80° - 1000° [0.80 - 10.38 m] (Zoom: Wide) 80° - 1000° [0.97 - 12.48 m] (Zoom: Tele) Throw ratio 0.46 - 0.56	60° - 1000° [0.79 - 14.00 m] (Zoom: Wide) 60° - 1000° [0.96 - 16.87 m] (Zoom: Tele) Throw ratio 0.62 - 0.75	60° - 1000° [0.94 - 16.85 m] (Zoom: Wide) 60° to 500° [1.34 - 23.29 m] (Zoom: Tele) Throw ratio 0.74 - 1.04	60° to 1000° [1.48 - 5.90 m] (Zoom: Wide) 60° to 1000° [2.05 - 35.20 m] (Zoom: Tele) Throw ratio 1.15 - 1.57
Lens Shift Range	Powered Vertical: +45% to +68% (H Center) Horizontal: ±10% (V Center)	Powered Vertical: ±18% (H Center) Horizontal: ±6% (V Center)	Powered Vertical: ±58% (H Center) Horizontal: ±16% (V Center)	Powered Vertical: ±18% (H Center) Horizontal: ±6% (V Center)	Powered Vertical: ±58% (H Center) Horizontal: ±16% (V Center)
Operating Temperature	0 - 50°C	0 - 45°C	0 - 50°C	0 - 45°C	
Storage Temperature			-10 - 60 °C		
Operating Angle of Tilt			360°		
Light Output (Brightness) *					
H832	10,700lm	10,200lm	10,800lm	10,400lm	11,700lm

\* Reference value: Colour Mode - Dynamic, Zoom - Wide, Lens Shift - V/H Center

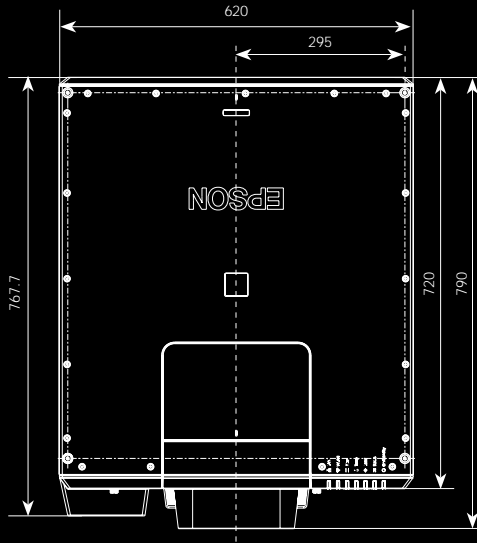
<sup>^</sup> Applicable for EB-L12000QNL only.



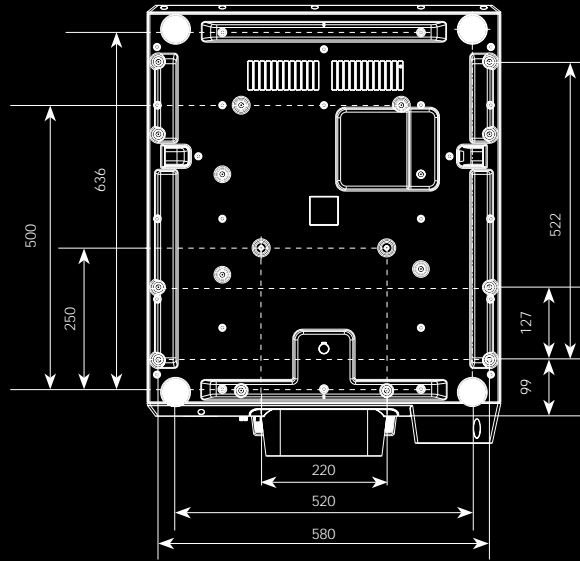
Product Image					
Model	Zoom Lens (ELPLW08)	Zoom Lens (ELPLM15)	Zoom Lens (ELPLM10)	Zoom Lens (ELPLM11)	Zoom Lens (ELPLL08)
Product Code	V12H004W08	V12H004M0F	V12H004M0A	V12H004M0B	V12H004L08
Specification of Main Parts					
Projection Lens					
Type	Powered : Zoom / Focus				
F-Number	2.0 - 2.3	1.8 - 2.35	1.8 - 2.4		1.8 - 2.5
Focal Length	19.71 - 27.48 mm	36.0 - 57.4 mm	55.4 - 83.3 mm	80.6 - 121.1 mm	119.0 - 165.4 mm
Zoom Ratio	1 - 1.4	1 - 1.6	1 - 1.5		1 - 1.4
Dimension (Diameter of Zoom Ring x Length)	139.5 x 248 mm	111.2 x 202 mm	104 x 243 mm	104 x 245 mm	104 x 247 mm
Weight(g)	3100g	1900g	2200g		
Position Sensor			Yes		
Lens ID			Yes		
Connector			24Pin		
Lens Exchange Correspondence			Yes		
Screen Size (Projected Distance)	60° - 1000° [1.08 - 18.65m] (Zoom: Wide) 60° - 1000° [1.53 - 26.23 m] (Zoom: Tele) Throw ratio 0.83 - 1.17	60° - 1000° [1.98 - 34.19 m] (Zoom: Wide) 60° - 1000° [3.24 - 55.28 m] (Zoom: Tele) Throw ratio 1.52 - 2.47	60° - 1000° [3.04 - 52.77 m] (Zoom: Wide) 60° - 1000° [4.70 - 80.35 m] (Zoom: Tele) Throw ratio 2.34 - 3.59	60° - 1000° [4.41 - 77.32 m] (Zoom: Wide) 60° - 1000° [6.82 - 117.30 m] (Zoom: Tele) Throw ratio 3.42 - 5.23	60° - 1000° [6.59 - 114.91 m] (Zoom: Wide) 60° - 1000° [9.34 - 160.70m] (Zoom: Tele) Throw ratio 5.09 - 7.16
Lens Shift Range			Powered Vertical: ±58% (H Center) Horizontal: ±16% (V Center)		
Storage Temperature			-10 - 60 °C		
Operating Angle of Tilt			360°		
Light Output (Brightness) *					
H832	11,500lm	12,000lm	11,400lm	11,200lm	

\* Reference value: Colour Mode - Dynamic, Zoom - Wide, Lens Shift - V/H Center

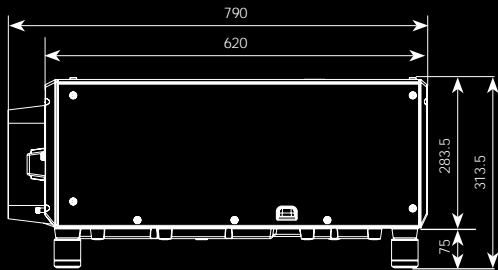
Top View



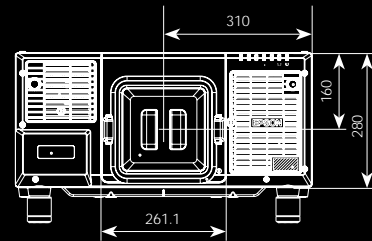
Bottom View



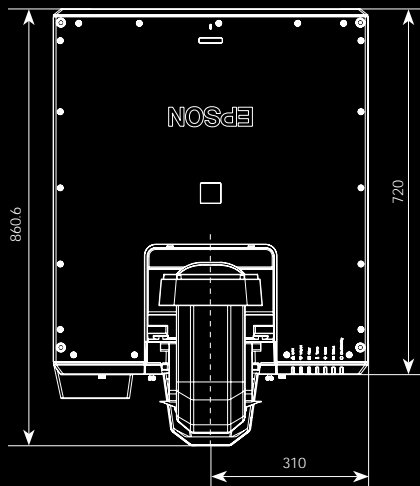
Side View



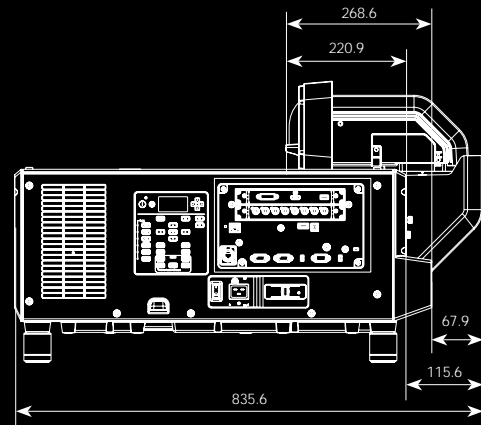
Front View



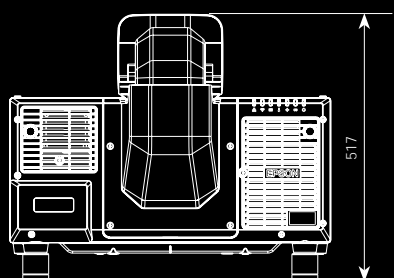
Top View (With ELPX02 lens)



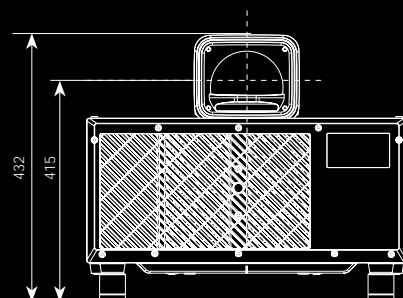
Side View (With ELPX02 lens)



Front View (With ELPX02 lens)



Back View (With ELPX02 lens)



**SPECIFICATIONS**  
**EB-L12000QNL/L2000UJL**

MODEL NUMBER		EB-L12000QNL	EB-L2000UJL
<b>Projection Technology</b>		RGB liquid crystal shutter projection system	
<b>Specifications of Main Parts</b>			
LCD	Size	1.04" (D11)	1.03" (D11)
	Native Resolution	4K (3840 x 2160) 4K (3844 x 2164) *Margin pixels included	WUXGA (1920x1200)
<b>Projection Lens</b>			
Type	Power Zoom, Power Focus		
F-Number	1.8 - 2.3		
Focal Length	36.0 - 57.3 mm		
Zoom Ratio	1 - 1.61		
Throw Ratio	1.52 - 2.47	1.57 - 2.56	
Lens Exchange	Yes		
Lens Shift	Mode	Powered	
	Vertical (Up/Down)	±58 %	±60 %
	Horizontal (Left/Right)	±16 %	±18 %
Light Source	Type	Laser Diode	
	Life (Normal/Eco)	20,000 / 30,000 hours	
<b>Screen Size (Projected Distance)</b>			
Zoom: Wide	60" - 1000" [1.98 - 34.19 m] (TBD)		60" - 1000" [1.99 - 34.43 m]
Zoom: Tele	60" - 1000" [3.24 - 55.28 m] (TBD)		60" - 1000" [3.26 - 55.63 m]
<b>Brightness <sup>1)</sup></b>			
White Light Output (Normal/Eco)	12,000 / 8,400 lm		20,000 / 14,000 lm
Colour Light Output	12,000 lm		20,000 lm
<b>Contrast Ratio</b>	Over 2,500,000:1		
<b>Geometric Correction</b>			
Vertical/Horizontal Keystone	±45° (TBD) / ±30° (TBD)		±44° / ±30° (TBD)
Quick Corner	Yes		
Curve Surface	Yes		
Point Correction	Yes		
Corner Wall	Yes		
<b>Connectivity</b>			
Analog Input	Mini D-Sub 15Pin	1	
	BNC	N/A	1
Digital Input	HDBaseT	1 (RJ45)	
	SDI	N/A	1 (SD-SDI, HD-SDI, 3G-SDI) (BarcoLink)
Expansion Interface Slot	Quantity	2	
	Factory Set	Slot 1: ELPIF01 (HDMI & DVI-D) Slot 2: ELPIF02 (SDI)	Slot 1: ELPIF01 (HDMI & DVI-D) Slot 2: Blank
	Expansion Interface Board		
ELPIF01	HDMI	1 (HDMI 19p)	
	DVI-D	1	
	DC Out	1	
ELPIF02	SDI In	4 (SD-SDI, HD-SDI, 3G-SDI, 12G-SDI)	N/A
	SDI Out	4 (SD-SDI, HD-SDI, 3G-SDI, 12G-SDI)	N/A
ELPIF03	DisplayPort In	2 (DP 20p)	
Analog Output	Mini D-Sub 15Pin	1	
Digital Output	BNC	N/A	
Others	USB Type A	1 (for Firmware Update, Copy OSD Settings, DC Out 900mA)	
	USB Type B	1 (for Firmware Update, Copy OSD Settings)	
Control I/O	RS-232C	1	
	Remote Control Input	1 (Stereo Mini)	
Network	Wired LAN	RJ45 x1 (etherCON)	
	Wireless	1	
<b>Wireless Specification</b>			
Supported Speed for Each Mode	IEEE 802.11b (2.4GHz): 11 Mbps <sup>2)</sup> IEEE 802.11g (2.4GHz): 54 Mbps <sup>2)</sup> IEEE 802.11n (2.4GHz): 130 Mbps <sup>2)</sup> IEEE 802.11a (5GHz): 54 Mbps <sup>2)</sup> IEEE 802.11n (5GHz): 270 Mbps <sup>2)</sup>		
Wireless LAN Security	Quick Mode: OPEN, WPA2-PSK, Advanced Mode: OPEN, WPA/WPA2-PSK, WPA-Enterprise		
<b>Operating Temperature</b>			
	0 - 50 °C <32 - 122 °F> (low altitude) 0 - 45 °C <32° - 113 °F> (high altitude)		
<b>Operating Altitude</b>			
	0 - 3,048 m (0 - 10,000 ft)		
<b>Direct Power On/Off</b>			
	Yes		
<b>Start-Up Period</b>			
	Less than 26 seconds, Warm-up period: 30 seconds   Less than 16 seconds, Warm-up period: 30 seconds		
<b>Cool Down Period</b>			
	Instant Off or 0 second		
<b>Air Filter</b>	Maintenance Cycle	20,000 hours <sup>3)</sup>	
<b>Power Supply Voltage</b>			
	100 - 120 V AC, 200 - 240 V AC +/- 10 %, 50/60 Hz		
<b>Power Consumption (200-240V)</b>			
Lamp On (Normal / Eco)	1741W / 1030W		1860W / 1123W
Standby (Network On / Off)	2W / 0.5W		
<b>Dimension Excluding Feet (D x W x H)</b>			
<b>Weight</b>	Approx. 113.3 lbs. / 51.4 kg		Approx. 109.3 lbs. / 49.6 kg
<b>Fan Noise (Normal / Eco)</b>			
	45 / 38 dB		

**Supplied Accessories**

Power Cable  
Remote Control  
Battery for Remote Control (AA x 2)  
Owner's Manual CD ROM  
Lens Connector Cap\*

**Optional Accessories**

Air filter: ELPAF58  
Remote Control Cable Set (10m x 2): ELPKC28  
HDBaseT Transmitter: ELPHD01  
Interface board: ELPIF01, ELPIF02\*, ELPIF03  
Ceiling Mount: ELPMB47, ELPMB48

**Optional Lenses**

Ultra Short Throw Zoom Lens: ELPX02  
Zoom Lens: ELPLU03\*, ELPLU04, ELPLW05\*, ELPLW06, ELPLL08, ELPLW08, ELPLM10, ELPLM11, ELPLM15

\* Only applicable for L12000QNL

EB-L12000QNL



EB-L2000UJL



©2019 Epson Singapore Pte Ltd. All Rights Reserved. Reproduction in part or in whole, without the written permission from Epson, is strictly prohibited.

EPSON and EXCEED YOUR VISION are registered trademarks of Seiko Epson Corporation.

All other product names and other company names used herein are for identification purposes only and are the trademarks or registered trademarks of their respective owners.

Epson disclaims any and all rights in those marks. Projected images shown herein are simulations. The actual product design and contents may vary. Specifications are subject to change without notice and may vary between countries. Please check with local Epson offices for more information.

Apple, iPad and iPhone are trademarks of Apple Inc., registered in the U.S. and other countries. App Store is a service mark of Apple Inc.

Android is a trademark of Google Inc.

Information correct as at January 2019

<sup>1)</sup> Colour brightness (colour light output) and white brightness (white light output) will vary depending on usage conditions. Colour light output measured in accordance with IDMS 15:4; white light output measured in accordance with ISO 21118.

<sup>2)</sup> Maximum speed and range is achievable when used with same enhanced mode technology. Actual data rates, features and performance may vary depending on your computer system, the environment and other factors.

<sup>3)</sup> 20,000H life for laser light source: Approximate time until brightness decreases 50% from first usage. Measured by acceleration test assuming use of 0.04 - 0.20 mg/m<sup>3</sup> of particulate matter. Time varies depending on usage conditions and environments. Replacement of parts other than the light source may be required in a shorter period.